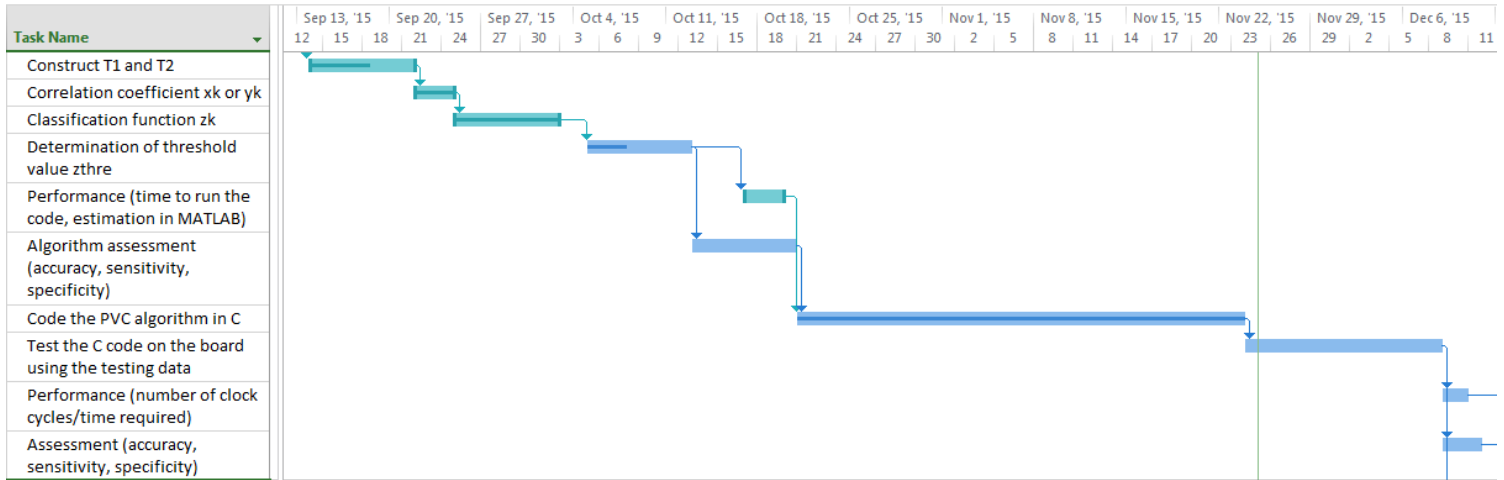


### Gantt Chart (11/19-11/24):



### Progress (11/19-11/24):

The team integrated the Pan-Tompkins C functions with the template-matching C functions and began to test the integrated system. The team also conducted further research into the alternative QRS complex detection algorithm, specifically the probability density function part of the hypothesis-testing phase. Lastly, for the wireless development phase, the team visualized the data sent to IBM's server using a PuTTY terminal.

### Goals (12/1):

The team will continue to test the integrated code project for accuracy, sensitivity, and specificity, as well as the time the code takes to run. Now that the team has received the requested reference, the cumulative sum method for hypothesis testing will be investigated in further detail. Once the hypothesis testing method is simulated in MATLAB, the simulation phase of the project will conclude, and the team will be on schedule. Lastly, the team will continue to investigate the IBM demo and examine how the program sends messages to the server.