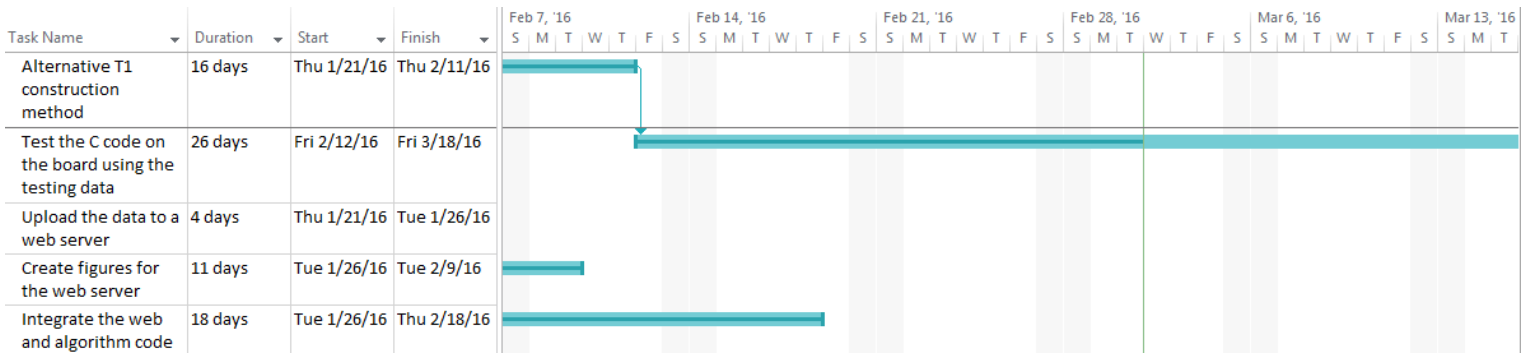


Gantt Chart (2/25-3/1):



Progress (2/25-3/1):

In the MATLAB simulation, the team worked on adjusting the window of samples used for generating T1 and adding some of the Hamilton-Tompkins logic to the Pan-Tompkins algorithm. The team also continued to test the combined system by investigating the discrepancies between the number of PVCs in the MATLAB simulation and the implementation results.

Goals:

The team will continue to tune the MATLAB simulation to further improve the algorithms. Also, the team will test the combined system with additional data records.