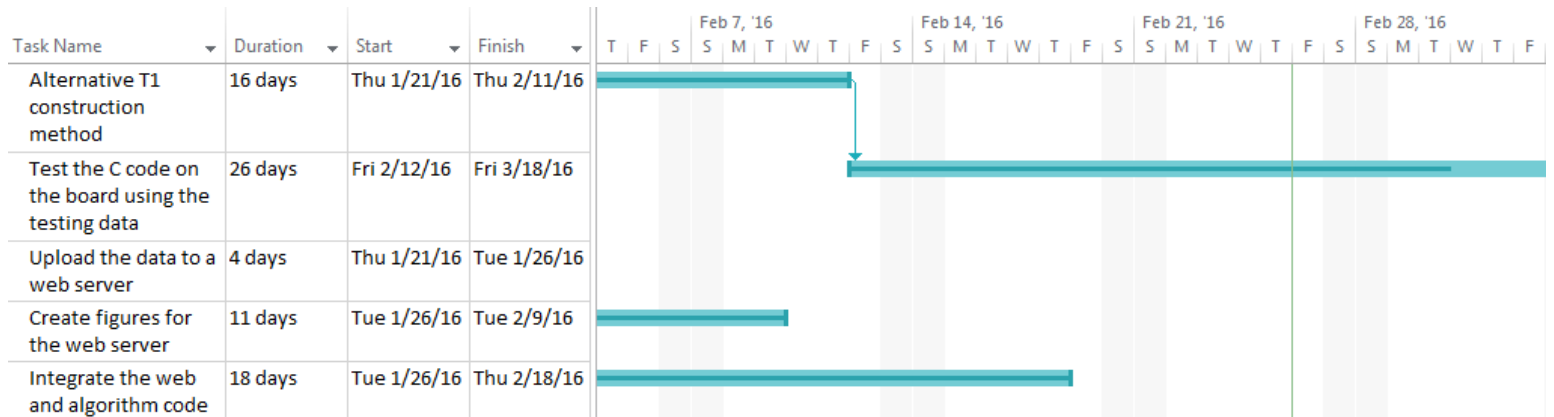


Gantt Chart (2/18-2/23):



Progress (2/18-2/23):

The team investigated the Hamilton-Tompkins algorithm for R-peak detection. Although the MATLAB simulation achieved results comparable to the Pan-Tompkins algorithm, the team opted to use the Pan-Tompkins algorithm for the embedded platform for the time being. On the CC3200, the team added the logic for sending the SMS message to the integrated code and completed the integration phase of the project. Lastly, the team began the final phase of the project: testing the algorithms on the CC3200 and analyzing the results.

Goals:

The team will finish lab work on the project by testing the complete system and judging the effectiveness of the algorithms. It is very possible that the team will complete the project before the end of March.