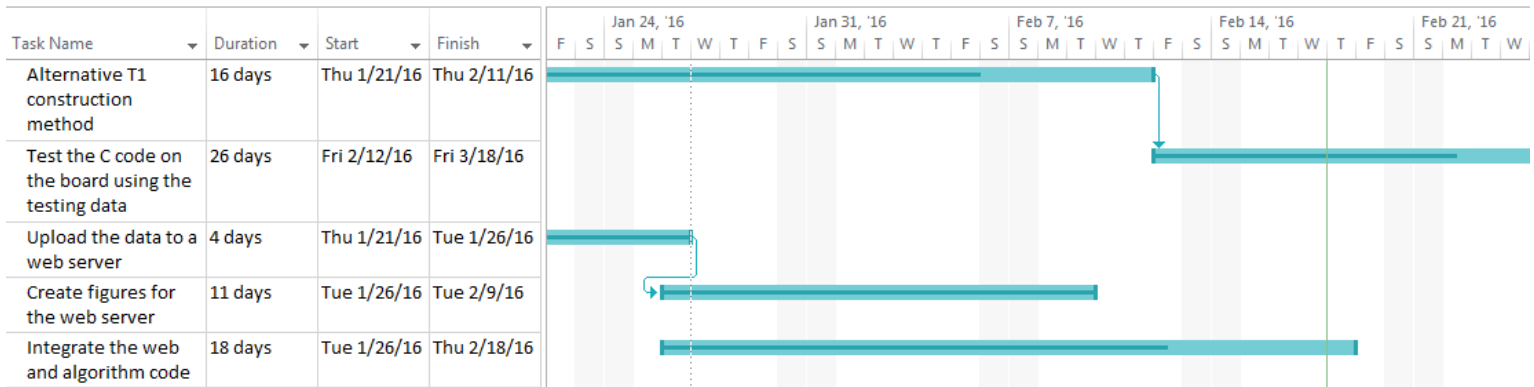


Gantt Chart (2/11-2/16):



Progress (2/11-2/16):

The team worked on different methods for improve the template-matching algorithm's sensitivity to PVCs. One method involved including more points in template T1, specifically after the end of the QRS complex. Another method involved making improvements to the accuracy of the Pan-Tompkins algorithm. The results so far are promising.

On the embedded development side, the team worked on an alternative T1 and T2 generation method to reduce overall code size. This new method, in addition to the wavelet transform algorithm, was coded in C and added to the combined Energia sketch.

Goals:

The team will continue to make improvements to the template-matching algorithm by investigating both template generation and the Pan-Tompkins algorithm. The team also will complete the integration of the wireless and C code by implementing the logic for sending a message to the patient's physician.