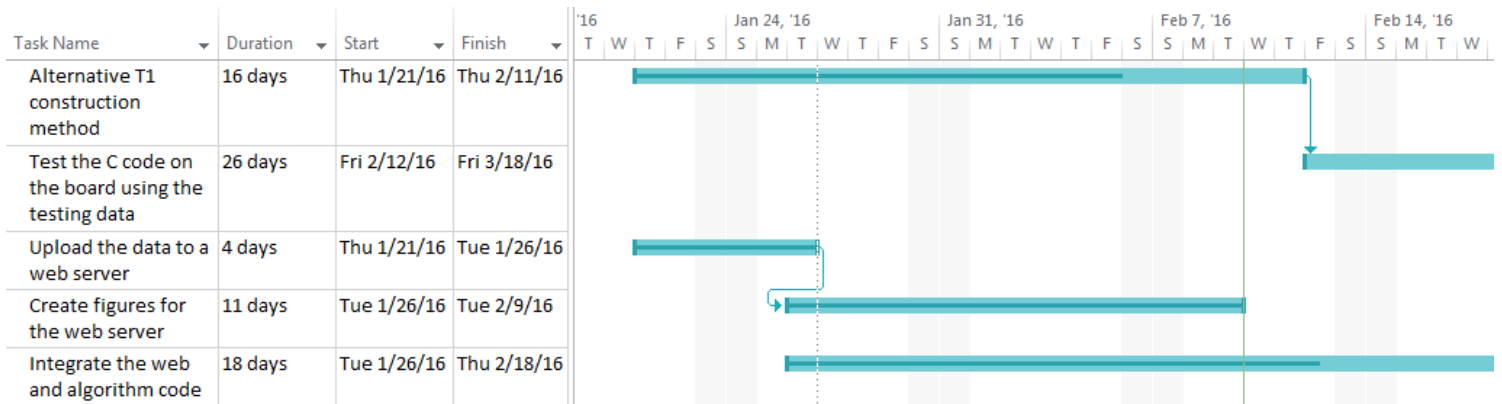


Gantt Chart (2/4-2/9):



Progress (2/4-2/9):

The team has integrated the wireless and C algorithm code into an Energia sketch in Code Composer Studio. This process involved synchronizing the PC testing system with the board to allow the wireless message to be sent without disrupting the input stream. The team also further investigated the wavelet transform algorithm for extracting the QRS complexes. Although the algorithm reduced the false positive rate for several records, the algorithm was less sensitive to PVC data. This may be due to higher correlation of T1 with the tested QRS complexes.

Goals:

The team will continue to improve the template-matching algorithm's accuracy by adjusting the emphasis placed on correlation with the templates T1 and T2. Also, the team will work on minimizing the code size of the project and finalizing the logic for sending the message. After these changes have been made, the integration phase will be complete.